



## Schindler 1000

Simple, reliable and compact





## Schindler 1000

### Simple, reliable and compact

With the Schindler 1000 elevating is made simple. Easy to choose, easy to plan, easy to own and easy to use. Safe, secure, stylish and strong. Designed to serve low- to mid-rise residential buildings, comfortably, quietly, efficiently and with style.

Schindler 1000 is part of Schindler's new, modular-platform product range for residential and educational buildings, from low- to mid-rise, and from basic to sophisticated requirements, worldwide.

#### Key figures

Capacity	480 kg, 630 kg, 800 kg, 1000 kg
Travel height	Up to 22 m
Stops	Max 7 stops
Speed	1.0 m/s
Drive system	Machine room-less, eco-friendly regenerative drive technology, frequency controlled
Group size	Up to 2 cars
Entrances	One sided
Interior	1 interior design line, fresh wall colors and a range of accessories
Number of starts	120 per hour



**Value for money**  
Swiss precision, value engineered.

**Future ready**  
Elevators designed to interface with next-generation technologies.

**Simply stylish**  
An attractive, easy-to-combine selection of décor and fixtures for the best match to your building.

**Compact design**



# Value for money

## Swiss precision, value engineered

Schindler 1000 is part of Schindler's new product family, a modular platform of high-quality components that deliver smoother, quieter and more reliable performance.



### Smooth operation

Schindler 1000 features a gearless drive system with Suspension Traction Media (STM) to ensure efficient operation and long-term availability. Combined with our new, lightweight elevator car and upgraded fixation system, the ride experience for passengers is not only smoother, but quieter, too.



### Quality through simplicity

Schindler 1000's standardized components and pre-engineered solutions ensure reliable performance at superior quality standards. This brings benefits throughout the entire life cycle of your elevator: easy maintenance, high availability and minimum downtime.



### Innovative drive technology

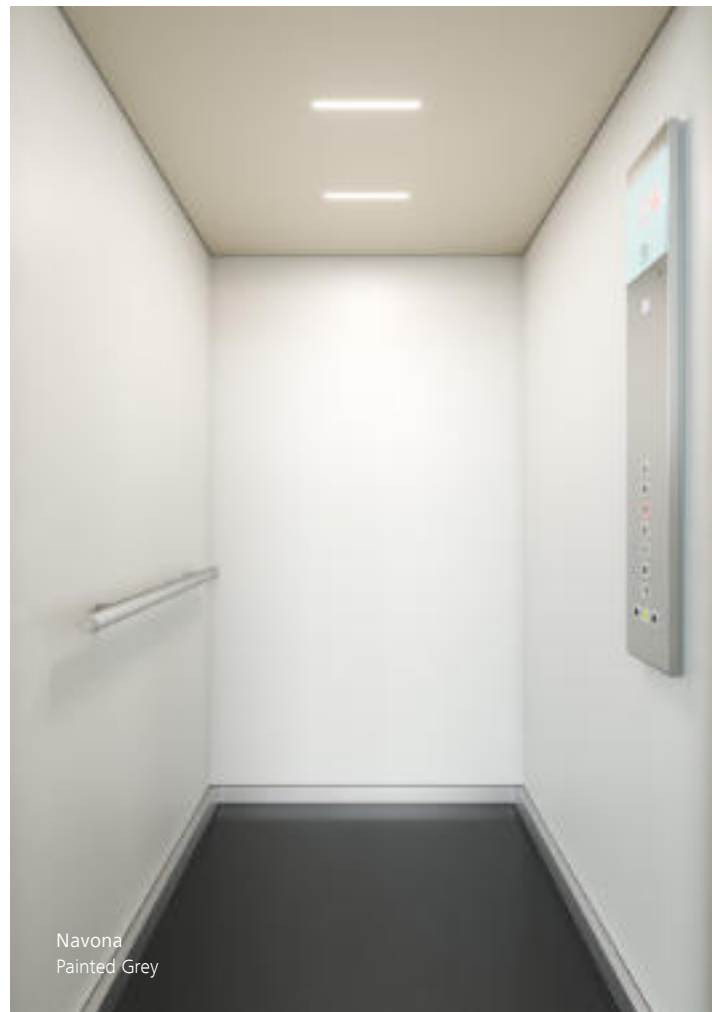
Regenerative drive technology is standard throughout our new modular product family, including Schindler 1000. This reduces travel energy by 30% compared to conventional technology.



### Environmentally sound

Improving energy efficiency is essential to reduce the environmental impact of elevators and the buildings they serve. Regenerative drive, LED lighting and stand-by mode while parked, are standard eco-friendly features in all Schindler 1000 elevators.





Navona  
Painted Grey



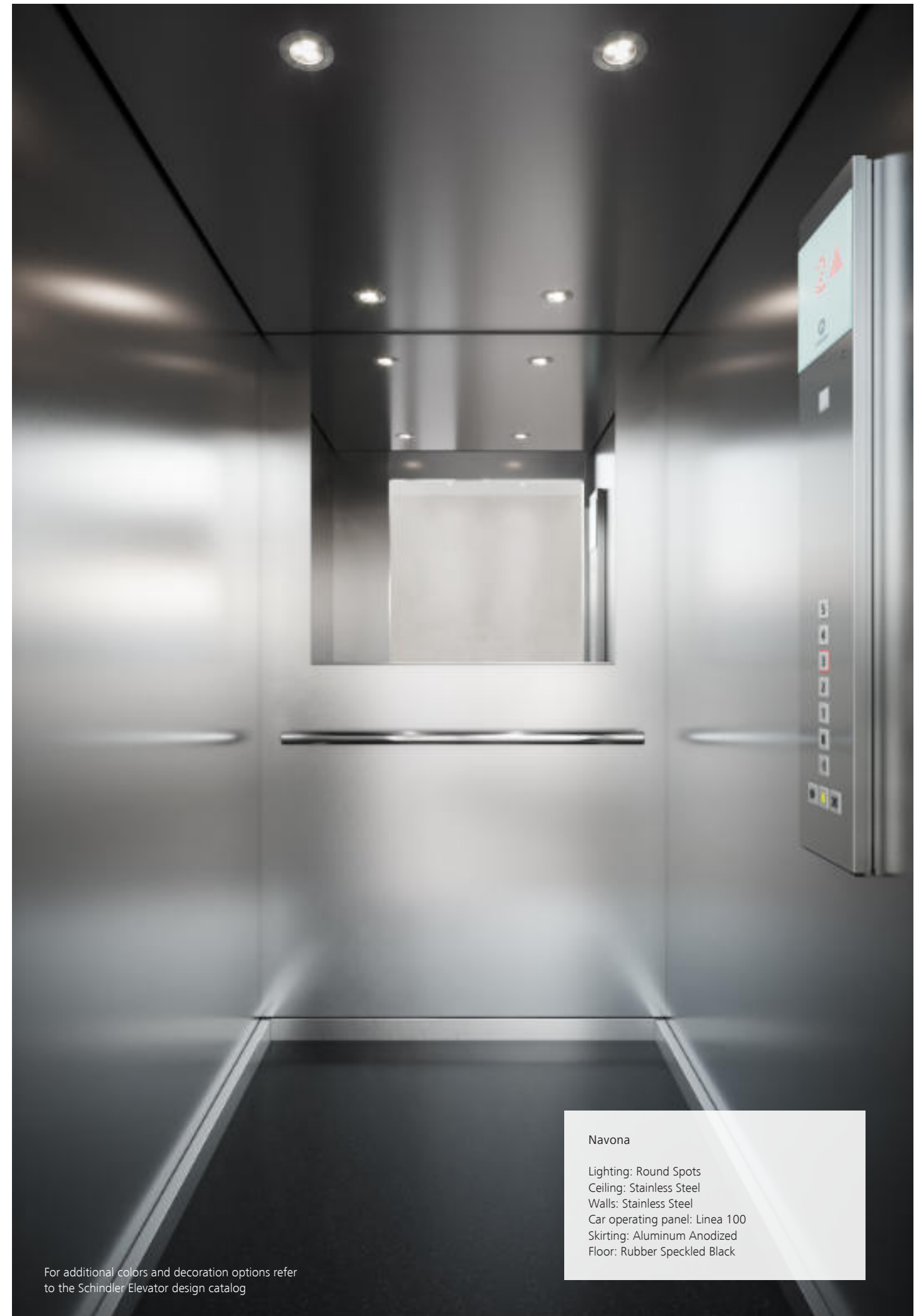
Navona  
Laminate Blue

## Simply stylish

Our Navona interior design line offers simple, yet refined décor options, keeping planning time and costs down but your artistic expression high.

### Navona Functional and durable

Clarity and comfort in your car with this robust design line. Fresh colors and durable accessories make Navona an excellent choice for residential applications. Elegant stainless steel options are also available for rear and side walls.



#### Navona

Lighting: Round Spots  
Ceiling: Stainless Steel  
Walls: Stainless Steel  
Car operating panel: Linea 100  
Skirting: Aluminum Anodized  
Floor: Rubber Speckled Black

For additional colors and decoration options refer to the Schindler Elevator design catalog

# Car operating panels and landing fixtures

## Linea 100

Integrated white glass display with large, easily readable red LED dot matrix

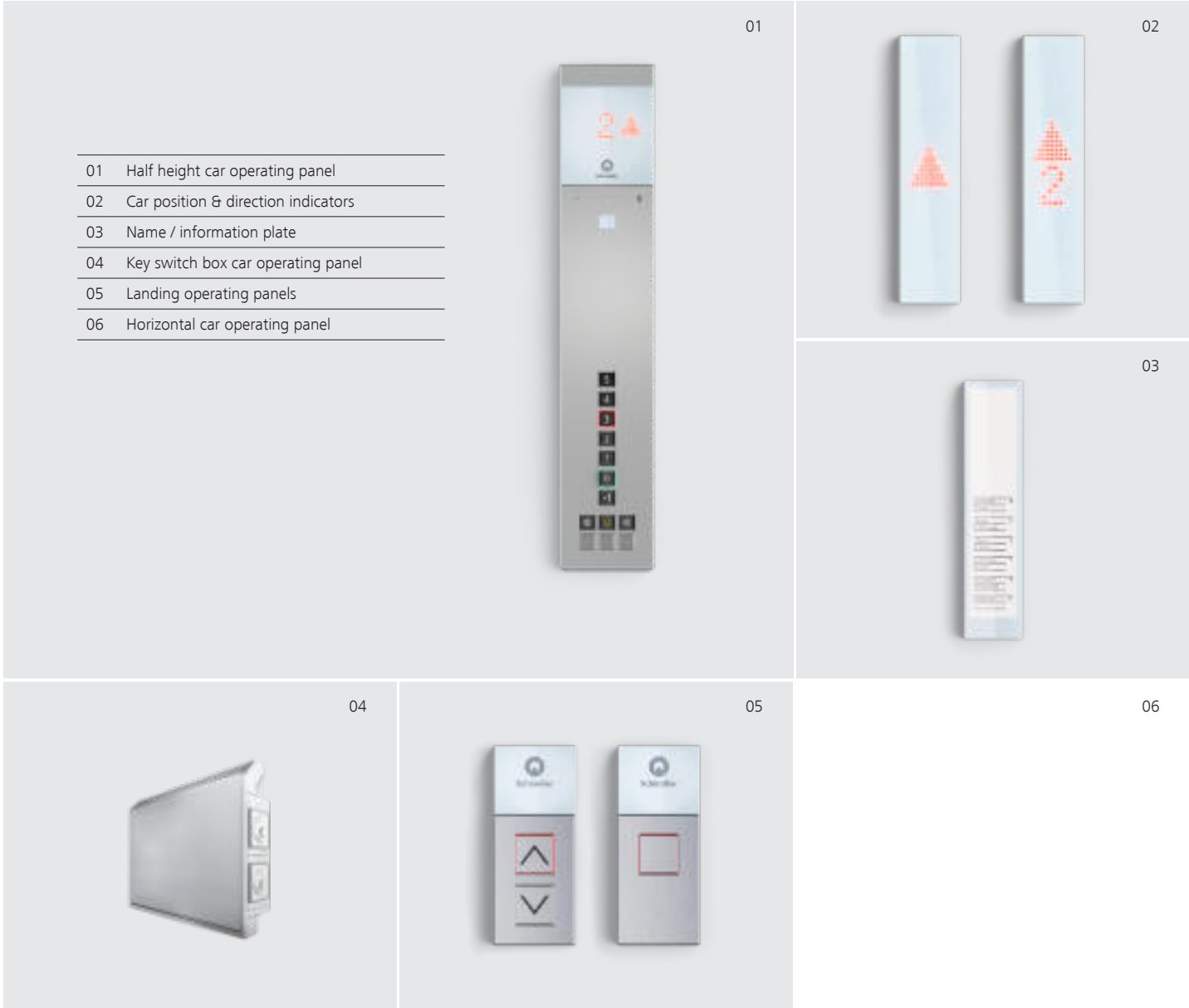
Sleek design. Stylish and functional



Emergency light

Emergency call button

Our operating panels and fixtures are ergonomically designed to make the passenger experience intuitive, smooth, and error-free. Linea 100 incorporates low-energy multiprocessor controls and operating panels fashioned in stylish, tempered safety glass.



- 01 Half height car operating panel
- 02 Car position & direction indicators
- 03 Name / information plate
- 04 Key switch box car operating panel
- 05 Landing operating panels
- 06 Horizontal car operating panel

\* Only available from AP Sourcing



# Mirrors and handrails

## Spacious and secure

Handrails convey a feeling of security. Schindler stainless steel handrails are designed to blend with car interiors, shapes and textures, and can be mounted to the side and rear walls. Available in curved, straight and straight with curved ends layouts.

Mirrors heighten the sense of space, depth and comfort in elevators. Your elevator can be fitted with a half-height safety-glass mirror on the side or rear wall of the car.

### Handrails



The handrails can be mounted in different combinations of side and rear walls. Different handrail shapes can be chosen according to your preference.

Straight, straight with rounded ends or curve



Straight  
Stainless Steel Polished Mirror



Straight with rounded ends  
Stainless Steel Brushed



Curved  
Painted Riga Grey

For additional Handrail designs, colors and material options refer to the Schindler Elevator design catalog

### Mirrors

For detailed mirror options, please refer to the Schindler Elevator Design Catalog.

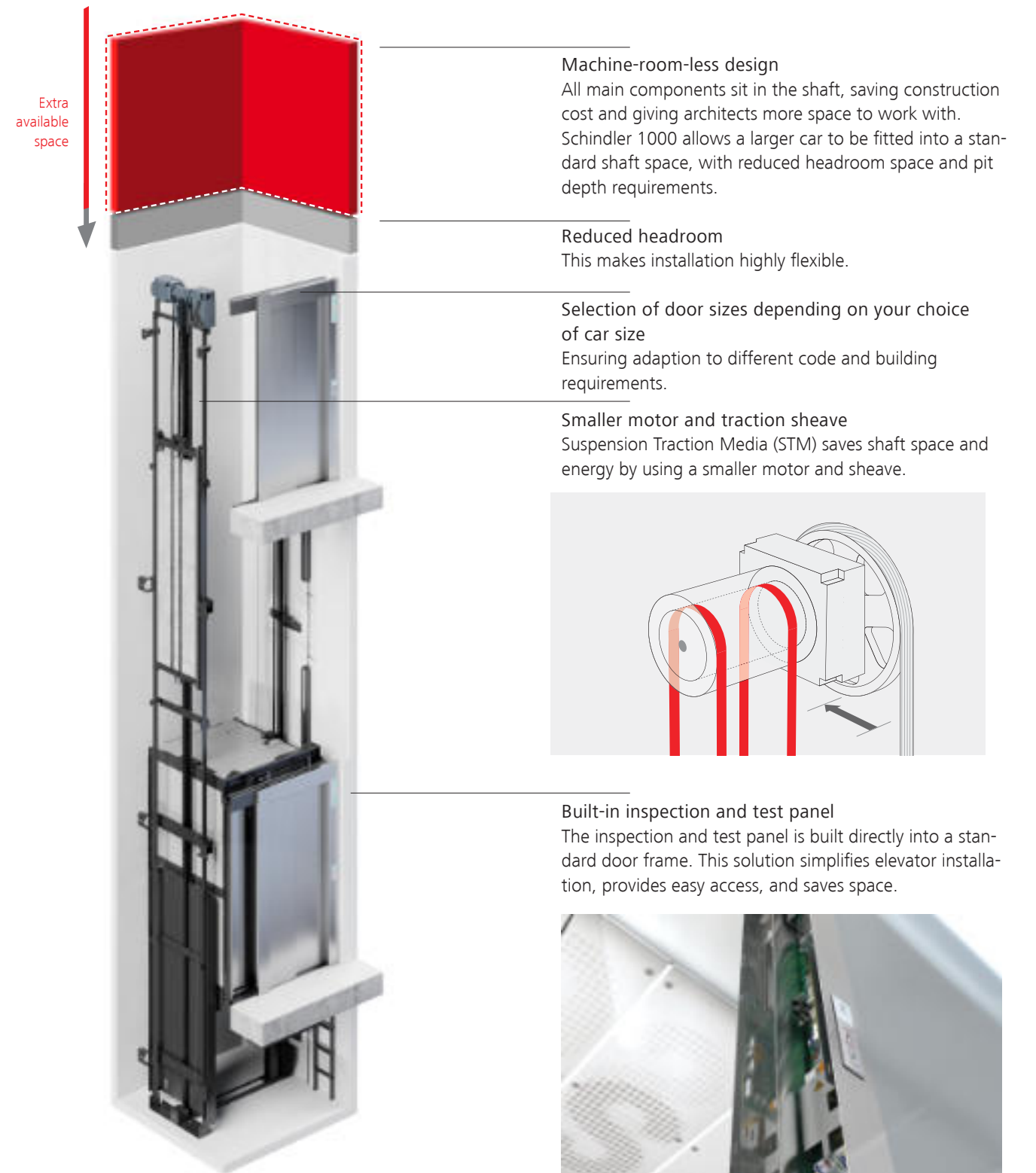


Navona  
Half height centered mirror

# Compact design

## Minimum space for maximum use

Schindler 1000 benefits from our MRL (machine-room-less) traction systems and compact door drives to optimize shaft space use, reducing construction costs and leaving space for tenants.



# Planning data

## AP Products

GQ kg	Passengers	VKN m/s	HQ max m	ZE max	Entrance	Car			Doors			Shaft			
						BK mm	TK mm	HK mm	Type	BT mm	HT mm	BS mm	TS <sup>(1)</sup> mm	HSG mm	HSK mm
400	5	1.00	22	7	1	1000	1100	2139	T2	800	2000-2100	1550	1550	1000	3850
630	8	1.00	22	7	1	1100	1400	2139	T2	800	2000-2100	1650	1800	1000	3850
										900		1700			
800	11	1.00	22	7	1	1350	1400	2139	C2	800	2000-2100	1850	1750	1100	3850
										900		1950			
1000	13	1.00	22	7	1	1400	1600	2139	C2	900	2000-2100	2000	1950	1100	3850
						1600	1400	2139				2050	1750		

GQ	Capacity	BK	Car width	T2	Telescopic door, 2-part	BS	Shaft width
VKN	Speed	TK	Car depth	C2	Central Opening door, 2-Part	TS <sup>(1)</sup>	Shaft depth 1 entrance
HQ	Travel height	HK	Car height			TS <sup>(2)</sup>	Shaft depth 2 entrances
ZE	Stops			BT	Door width	HSG	Pit depth
HE	Interfloor distance			HT	Door height	HSK	Headroom height for safety gear on counterweight HSK min. + 70 mm

Shaft dimensions shown at minimum plumb, building tolerances should be added if required

Interfloor distance (HE) is:  
min.2550 mm for door height 2000 mm  
min.2650 mm for door height 2100 mm

Smaller shaft dimensions are possible, but are dependant on EN81-20/50 regulations. Please discuss any requirements with your local sales representative

# Planning data

## EU Products

GQ kg	Passengers	VKN m/s	HQ max m	ZE max	Entrance	Car			Doors			Shaft			
						BK mm	TK mm	HK mm	Type	BT mm	HT mm	BS mm	TS <sup>(1)</sup> mm	HSG mm	HSK mm
480	5	1.00	22	7	1	1000	1300	2139	T2	900	2100	1600	1650	1000	3800
630	8	1.00	22	7	1	1100	1400	2139	T2	800	2000-2100	1600	1800	1000	3850
										900		1650			
675	9	1.00	22	7	1	1200	1400	2139	T2	800	2000-2100	1700	1800	1000	3850
										900		1750			
1000	13	1.00	22	7	1	1100	2100	2139	T2	900	2000-2100	1650	2450	1000	3850

GQ	Capacity	BK	Car width	T2	Telescopic door, 2-part	BS	Shaft width
VKN	Speed	TK	Car depth	C2	Central Opening door, 2-Part	TS <sup>(1)</sup>	Shaft depth 1 entrance
HQ	Travel height	HK	Car height			TS <sup>(2)</sup>	Shaft depth 2 entrances
ZE	Stops			BT	Door width	HSG	Pit depth
HE	Interfloor distance			HT	Door height	HSK	Headroom height for safety gear on counterweight HSK min. + 70 mm

Shaft dimensions shown at minimum plumb, building tolerances should be added if required

Interfloor distance (HE) is:  
min.2550 mm for door height 2000 mm  
min.2650 mm for door height 2100 mm

Smaller shaft dimensions are possible, but are dependant on EN81-20/50 regulations. Please discuss any requirements with your local sales representative



## Schindler Sub Saharan Africa

For more information, please contact your local office

### Head Office

27 Hippo Road  
Springfield  
Johannesburg  
South Africa  
2190

Call Centre: 0860 102 513  
Tel: +27 10 346 3225

Email: [sales@za.schindler.com](mailto:sales@za.schindler.com)

### Namibia

Cnr of Frans Idongo and John Meinert  
Street No 84  
Windhoek West  
Namibia

Office Tel: +264 61 240 362  
Call Centre (Primary) Tel: 084 000 9001  
Call Centre (backup) Tel: 084 000 9002  
Email: [sales@za.schindler.com](mailto:sales@za.schindler.com)

### Botswana

Plot 20695  
Broadhurst Industrial, Block 3  
Gaborone  
Botswana

Office Tel: +26 7 393 0283  
Call Centre (Primary) Tel: 373 1350  
Call Centre (backup) Tel: 373 1351  
Email: [sales@za.schindler.com](mailto:sales@za.schindler.com)

### Call Centre - South africa

27 Hippo Road  
Springfield  
Johannesburg  
2190

Main number: 0860 102 513  
Backup Number: +27 87 087 6999

### Midrand

Unit E, Alphen Square West  
338 George St Randjespark  
Midrand  
1683

Regional Manager Gauteng & Bloemfotein  
Tel (1): +27 12 481 9920  
Tel (2) +27 10 346 3335  
Cell: +27 82 418 0128

### Durban

1 The Boulevard  
Westway Office Park  
Westville  
3629

Regional Manager Durban  
Tel: +27 31 465 3106  
Cell: +27 71 674 9378

### Cape Town

1 Rainbow Close, Rainbow Park  
Racecourse Road, Montague Gardens  
Cape Town  
7441

Regional Manager Cape Town  
Tel: +27 21 552 4831  
Cell: +27 82 337 1377

### Gqeberha

651 Cape Road,  
Hunters Retreat Business Park, Parsonsvei  
Gqeberha  
6001

Branch Supervisor Port Elizabeth  
Tel: +27 41 484 5156  
Cell: +27 82 377 8151

### Export Department

27 Hippo Road  
Springfield  
Johannesburg  
South Africa  
2190

Africa Export Manager  
Tel: +27 11 681 8888  
Cell: +27 82 379 7328